



children'sbureau®

BUILD HOPE

An annual campaign to
create child resiliency

buildhope@all4kids.org

Build Hope by Investing in Child Resiliency



Dear Partners and Friends,

We invite you to help **ensure that every child in the Children's Bureau's Family is resilient in the face of adversity.** There are many obstacles to success for vulnerable children in our community—poverty, maltreatment, neglect, inadequate education, food and housing insecurity, substance abuse, violent environments, and limited access to resources and supportive networks. We believe that helping children thrive in strong families and communities is a public concern. This is why Children's Bureau continues to protect vulnerable children through prevention, treatment, and advocacy.

What child doesn't want to grow up in a happy, healthy environment where they can play, learn, and realize their potential? This is why we must **BUILD HOPE, an annual campaign to create child resiliency.** When we provide early childhood education, we place children on a path of economic well-being for themselves and future generations. When kids and families learn coping strategies, they master human interactions, reducing stress and trauma. We know that children are not raised in isolation, so we protect them by strengthening the capabilities of those who raise them. Our caregivers report that Children's Bureau's services significantly enhanced their abilities to resolve family conflict.

When we connect families to medical and mental health services, we fortify their ability to lead healthier lives. When we increase the capacity of the entire community to support children, we help every child achieve the resiliency they need to thrive.

Why do we care? We have spent our lives devoted to the protection of children and families. Mindy has served on our board since 2004. She and Gene invest in child development through the Tikun Olam Foundation. Matt is ever devoted to the advocacy of children and families in need. Tom will do whatever it takes to end child abuse. Martin is concerned about creating equity for children with less resources. A volunteer for 20+ years, Salvador is deeply devoted to uplifting lives of underserved populations. And Hope, a civic leader, is passionate about the youngest among us. **We each invest in Children's Bureau and we have plans to give more.**

Build Hope will help us raise the funds we need to ensure that children and families thrive. Together, we ask you to help us **make an investment in children that is transformational.**

Take a deeper look at Children's Bureau. Then contact our Hope Builders. There are lots of ways that you can help us protect children. **Show that you care and BUILD HOPE.**



Tom Casarella
Tom Casarella
Development Committee Chair
Children's Circle Donor



Martin Jacobs
Martin Jacobs
Former Board Vice Chair
Partners in Hope Donor



Gene and Mindy Stein
Gene and Mindy Stein
Funders in Hope Donors
Partners in Hope Donors



Salvador Villar
Salvador Villar
Former Board Member
Society of 1904 Donor



Matt Wilson
Matt Wilson
Board Chair
Partners in Hope Donor



Hope Wintner
Hope Wintner
Board Director
Partners in Hope Donor

Partner with our committed team to Build Hope at buildhope@all4kids.org and 1-855-685-HOPE (4673)!



About Children's Bureau

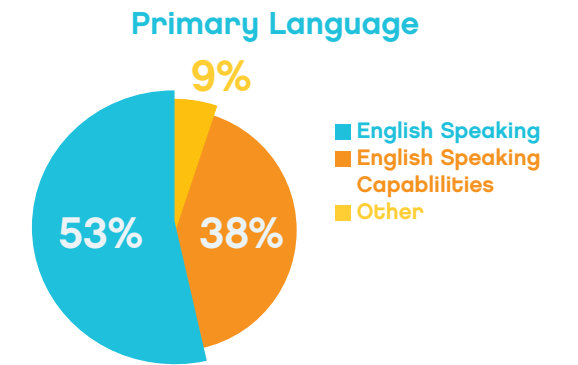
Children's Bureau has been saving children's lives with innovative and cutting-edge child welfare programs since 1904. Serving over 39,000 children and parents annually in Los Angeles and Orange Counties, we are one of the largest investors in prevention in the country. We leverage comprehensive strategies to revolutionize the way child maltreatment is addressed. Our mission is to protect vulnerable children through prevention, treatment, and advocacy. Our vision is to help children thrive in strong families and communities.

Agency Awards and Recognition

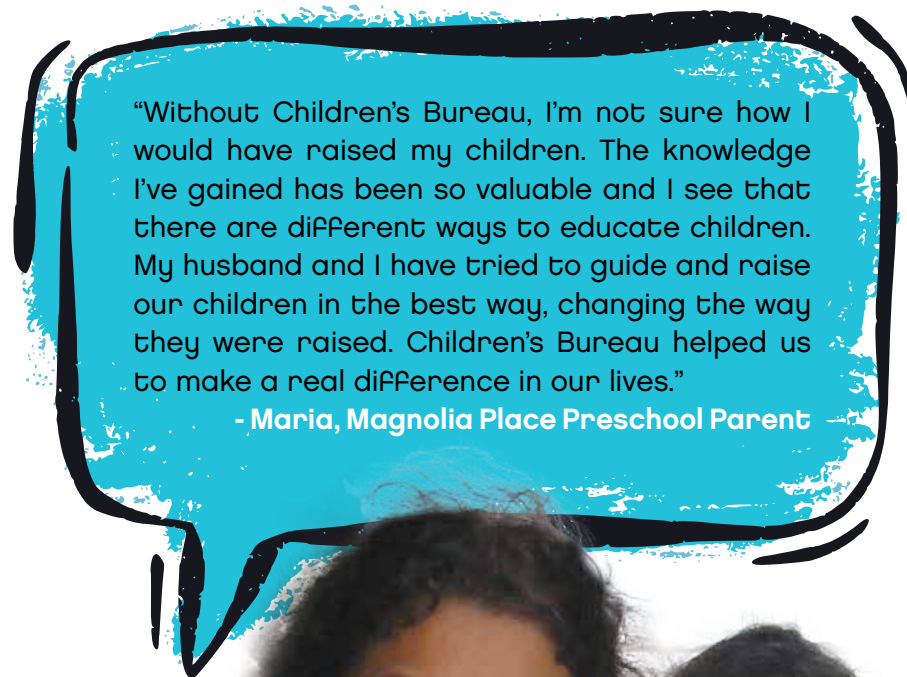
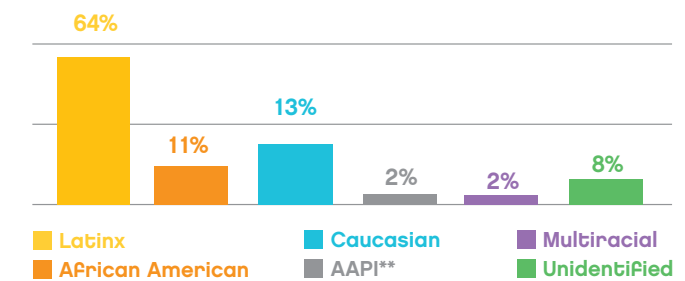
- Certified Trauma-Informed Care Organization in partnership with the National Council for Behavioral Health
- Lead agency at the Los Angeles Child Abuse Prevention Councils
- Proud member of: Alliance for Stronger Families and Communities, California Family Resource Association, Child Welfare League of America, Association of Community Human Services Agencies, California Association of Adoption Agencies, California Alliance of Child & Family Services

Who We Serve

- About 93% of the families we serve have a household income that is 80% lower than the average area median income
- 66% of clients self-refer to Children's Bureau for assistance/services
- 33% of clients are referred to Children's Bureau by partner organizations



Client Population Diversity



*Names have been changed to protect Family identity
**AAPI stands for Asian American/Pacific Islander

A Passion For Prevention

We are an integrated, comprehensive prevention organization dedicated to protecting vulnerable children. We view prevention on a continuum, from Primary Prevention services that ensure children experience the well-being, safety, and good health needed to avoid any harm and trauma; to Secondary and Tertiary Prevention services that help children and families heal from existing trauma and prevent further harm.

How we support children and Families



Child Support Programs

- Family Enrichment Program (FEP)
- Magnolia and Place Preschool
- Infant and Toddler Home Visiting Orange County

Family and Community Programs

Family Resource Centers (FRCs)

- Family friendly, community-based collaboratives with the capacity to provide on-site access to comprehensive prevention and treatment services

Focus on Families with children birth to five years

Family Support

- Address the specific needs of refugee children, immigrant families, fathers, relative caregivers, childcare, youth after school, and linkage to local community resources

Mental Health

Family Foster Care and Adoptions

- Adoption Promotion and Support Services
- Foster Care and Foster-Adopt
- Private Adoption Home Study Program
- Relative Support Services
- Resource Parent Recruitment and Training

Transform Communities and Systems

Develop best practices to transform systems within and among organizations that improve community outcomes that are scalable and sustainable

- Best Start — Antelope Valley
- Los Angeles Community Child Abuse Councils • latchildabusecouncils.org
- MCI Network — Los Angeles • themcinenetwork.org
- Network Anaheim
- Public Policy and Advocacy

Gabriella, Sofia, and Hector - Los Angeles

Gabriella and daughter, Sofia, were participating in the Family Enrichment Program (FEP) when the pandemic began. The new reality was hard on the family. They felt isolated and lonely. Sofia was sad that she couldn't continue going in-person to their weekly FEP sessions. They were grateful when the agency began offering virtual sessions and they could connect with their friends again. During this time, Hector, Sofia's father, lost his job, putting the family in a tough financial position. Children's Bureau applied for funding from Change Reaction on behalf of the family, securing funding for rent and bills, and connecting them to food banks and other helpful outside resources. Program staff also bridged the family to Children's Bureau's mental health services to provide extra support during this challenging period.

"When my first child entered school at five years old, it was very hard for him. I see the difference with my little girl who is attending the Family Enrichment Program. She can write her name and is able to do different activities... When I needed to talk or be heard, the Family Enrichment Program was there for me and my family."

- Gabriella, FEP Parent



*Names have been changed to protect family identity

Schedule a presentation to learn why our programs

work at buildhope@all4kids.org and 1-855-685-HOPE (4673)!

Improving child well-being to help children thrive



What's at Stake

Child well-being is at the heart of a thriving, successful society. When children fail, or rather when we fail children, society suffers both in the short and long term. In 2020, over 147,000 children were referred to Children and Family Services for reports of child abuse or neglect in Los Angeles and Orange Counties, and around 30% of those children were age five years old and younger. It does not have to be this way.

Child Maltreatment is Not Inevitable

Child maltreatment and poor child well-being are not simply a matter of poor individual choices. They are part of larger social conditions and systemic adversity. Poverty, systemic racism and inequities exacerbate the challenges vulnerable children face. We recognize that by strengthening their resilience and providing a foundation of support, together we can change the life trajectory of these children.

When children experience trauma or adverse experiences, this dramatically impacts their development as well as their future health and success. Prevention ensures that children experience well-being, safety, and good health – factors that are vital in building resilience and help children avoid any harm and trauma in the first place.

Child Well-Being Starts with Early Childhood Services

A safe and healthy environment during childhood (and especially during the first five years) forms the foundation for a lifetime of physical and mental well-being, healthy relationships, and economic mobility. Our Primary Prevention programs:

- Improve child safety
- Support child development and mental health
- Provide early education opportunities to improve school readiness
- Strengthen parent-child attachments

Child Well-Being Leads to Lifelong Success

When you invest in a child's early years, they are less likely to need special education, be held back in school, and enter the juvenile justice system. Significant support for vulnerable children increases their resilience and leads to a higher rate of high school completion and college attendance as well as a higher employment rate and earnings average.

The Atlas Family Foundation

Since 2007, The Atlas Family Foundation has been a partner with Children's Bureau, supporting families of young children through grants, connecting like-minded donors to our work, and advocating for investments in early childhood. They focus on the earliest stages of life, prenatal care to three years of age, when the critical ingredients for success in relationships, school, jobs and family life are in development.

"The Atlas Family Foundation believes in equal opportunity for all children to realize their promise. Prenatal and early child development lay the groundwork for a lifetime of vitality and success, setting Families and young children on the right path and optimum trajectory from the very beginning."

- The Atlas Family Foundation

Top Institutional Donors

The Ahmanson Foundation

Annenberg Foundation

Ballmer Group

The Crean Foundation

The Carl & Roberta Deutsch Foundation

Doris Duke Charitable Foundation

The Green Foundation

The Ralph M. Parsons Foundation

The Rose Hills Foundation

Tikun Olam Foundation



Become a Funders in Hope donor. Contact

us at buildhope@all4kids.org and 1-855-685-HOPE (4673)!





Abuse Versus Maltreatment

Most parents don't intend to harm their children. So why does it happen? There are many risk factors that play a pivotal role in child maltreatment. Isolation, poverty, substance abuse, loss of job or home, and mental health issues are just a few of the life situations that can cause high stress and overwhelming feelings. Add to the mix the needs of a child and life becomes hard. Really hard.

According to the Child & Family Research Partnership, Austin, Texas "Research shows that mothers with poor social networks are twice as likely to maltreat their children, single parenthood more than doubles the risk of Child Protective Services involvement in families, and parental substance abuse more than doubles a child's risk of exposure to physical or sexual abuse."

Families Want Their Children to Thrive

We recognize that to change the life trajectory of vulnerable children, we must include in our approach the families raising these children. Children are part of a family unit, and for children to thrive, their families also need to thrive. Prevention ensures that parents and caregivers have the skills and resources they need to provide safe, stable, nurturing homes.

How We Build Family Well-being

Strengthening the skills and support systems for families of vulnerable children means reducing risk factors and building protective factors. Every year we provide about 14,000 caregivers with family-strengthening services. Our Primary Prevention programs:

- Improve the whole family's daily functioning and mental health
- Develop nurturing parenting skills and strengthen parent-child attachments
- Ensure families have access to both concrete support in times of need and support systems they can rely on
- Build parental resilience

Strong Families Raise Resilient Children

Research shows that children who experience early attachment and nurturing by a parent are more likely to have better grades, a better ability to cope with stress, healthier behaviors, and more positive peer interactions. When parents and caregivers participate in our programs, they gain confidence in themselves and their ability to parent; they develop strong social connections and relationships with others in the community; and, they build a network.



Marc Washington's commitment to Children's Bureau goes beyond financial support. Since joining the board in 2019, he has served on multiple committees including Program, Governance, and the Diversity, Equity, and Inclusion Taskforce. Most recently, Marc played a key role in setting the priorities and direction of the agency when he co-chaired the Strategic Planning Committee. As the Founder and CEO of Uplifting Results Labs, a food-tech company, he advocates for proper nutrition and healthy families.

"I'm continuously inspired by the incredible work that Children's Bureau does to support children and their Families. I'm proud to do my part as a Board member in contributing to the important mission of the organization."

- Marc Washington
Partners in Hope Donor



Since 2004, Cindy and Charlie have contributed \$800,000 in support of Children's Bureau programs, events, and capital campaigns. Charlie served on the board of directors for 13 years, holding positions on various committees including Program, Facilities, and Audit. Charlie is a current member of the Advisory Council, and he and Cindy are members of Children's Bureau's Planned Giving Program, the Society of 1904.

"We are pleased to help vulnerable children gain access to services that build their support systems and provide nurturing Families."

- Cindy and Charlie Marquis
Partners in Hope Donors

Creating community well-being to support thriving children & families



Where we live, work, and play matters

Families do not exist in a vacuum – they are part of a larger ecosystem. Just as children are raised within families, families live and operate inside communities. To ensure the success of children and families, our approach must include the communities in which they live, and the government and nonprofit systems that are woven through their lives. Rather than focusing on providing direct services, our community well-being efforts connect and build the capacity of people, programs, and places to advance the four pillars of a thriving community: nurturing parents, school readiness, good health, and economic stability.



Ricci Ramos, Technical Program Manager at Riot Games, has served on Children's Bureau's Board of Directors since 2020, supporting the agency with her 20+ years of management experience. She participated for multiple years in a literacy program at Magnolia Place Family Center's library. Her investment as a Children's Circle donor comes from a desire to make a real impact on communities in need.

"I choose to give my time and resources to Children's Bureau because I know that their high commitment level to the community matches my own. With a century-long history, strong reputation, and serious dedication to children and families, I know for sure we are making a difference."

- Ricci Ramos
Children's Circle Donor

How We Create Community Well-being

Communities improve when the people living there have a voice, participate in local government, join school boards and local agencies, and are actively engaged in the systems that serve and support that community. The government and nonprofit systems that support communities also improve when they collaborate, engage in learning together, and share resources and data. Our Advocacy and Prevention services:

- Build social connections and provide warm handshakes
- Develop pathways to increase community engagement, voice, and representation
- Advocate for equitable systems and policies
- Provide platforms to develop innovations and share best practices
- Build the capacity of family-serving organizations to prevent child maltreatment

Strong Communities Benefit Everyone

Our community well-being efforts help build and sustain local networks working to improve systems, resulting in better outcomes for children, families, and society overall. There is both social and economic benefit to investing in this work. Child maltreatment impacts more than just the child and family, it impacts us all. The long-term resulting costs of child maltreatment in 2021 to institutions like healthcare, human services, education, the juvenile justice system, and others are estimated to be about \$22.6 billion dollars.

Ask Us About MCI Network

MCI Network is a social innovations lab with a model for prevention that is working to go beyond direct services to create large-scale community change within a 500-block span of Los Angeles serving 35,000 children. The MCI Network team creates and shares tools that help residents and partner agencies take actions that build upon the resilience of the community to respond to the major stressors that impact child and family wellbeing.

Become a Children's Circle donor. Contact us at buildhope@all4kids.org and 1-855-685-HOPE (4673)!

Our dedicated experts BUILD HOPE for children and families



"128 children step into Magnolia Place Preschool each year. The rooms are filled with laughter, smiles, and joy despite economic disparity and trauma. We help children build an educational foundation that will carry them throughout their life."

*Paquita Mansouri, MA, Preschool Program Supervisor,
Prevention - Child Development Center*



"Over 10,000 individuals visit our Family Resource Centers annually for domestic violence services, parent education classes, life-skills workshops, and much more. We collaborate with multiple organizations to offer comprehensive strengths-based solutions tailored to individual community needs. I love when some of the children we've served come back to volunteer as teenagers or adults, helping families and kids just like them."

*Michele Essex, MA, Program Manager, Prevention -
Family Resource Centers*



"For over 20 years, I have educated, developed, and supported hundreds of families through their foster care and adoption journeys. Creating forever families holds a special place in my heart. There are over 30,000 children in foster care in Los Angeles County right now. I am proud to be part of an organization that supports children as they build new bonds of love and hope."

Cynthia Stogel, LMFT, Coordinator, Foster Care and Adoption

"I believe that our approach works. We address the needs of everyone in a family unit, including fathers. Research shows high levels of father involvement are correlated with higher levels of sociability, confidence, and self-control in children. Equally important, strong parenting relationships make strong parent-child relationships possible, and that's how children thrive."

Nick Mazzeo, MBA, Program Manager, Prevention



"Mental health workers help traumatized, scared, and struggling children develop healthy coping skills, inner strength, and build resilience using evidenced-based practices. Watching the transformation when children are shown kindness is simply amazing."

Kimberly Klaseen, Psy.D., Regional Clinical Director, Mental Health



Ceth Ashen, Ph.D has been a Mental Health Consultant for Children's Bureau since 2006. She has supported the development, growth, and quality of service delivery across our mental health programs serving nearly 4,000 children and their families each year. Dr. Ashen has been a practitioner, supervisor, and consultant for Children's Bureau's staff across multiple evidence-based practices. She has trained Children's Bureau staff to work with youth who suffer from behavioral problems, depression, anxiety, trauma and often a combination of these problem areas. With 1 in 6 children today dealing with some form of mental health issue, effective therapy can help children heal and promote resiliency.



"I am honored to be part of Children's Bureau's Mental Health team where together we grapple with ways in which to make meaningful, positive change for the youth and families whom we have the privilege to serve." - Ceth Ashen, Consultant, Mental Health



**1 in 6 children today
are dealing with some
form of mental health issue**

Learn how our program staff supports our

families! buildhope@all4kids.org and 1-855-685-HOPE (4673)!



Dear Friends and Supporters,

I am personally committed to making **BUILD HOPE** happen for our children and families. They inspire me every day — their triumphs over adversity,

After learning about Maria, Gabriella, and Rachel, I hope you are equally motivated to **say “yes” to create resiliency** so our kids can fulfill their dreams. If so, you will be in great company. We have assembled an amazing team of donors, volunteers, staff, and community members who are as committed as Tom Casarella, Martin Jacobs, Gene and Mindy Stein, Salvador Villar, Matt Wilson, and Hope Wintner.



We are determined **to raise over \$16 million** over the next three years to ensure that every child has the foundation they need to thrive in our society.

Our mission is clear. With these funds we will **improve the well-being of children** in our region and advocate for children everywhere. We know for sure that maltreatment and neglect can be prevented. With your support we can help families function better, develop nurturing skills, and strengthen parent-child attachments, **turning your investment into increased Family well-being**. This builds parental resilience increasing protective factors. We will also **improve the larger ecosystem** to ensure that the places that children live, play, and grow support them.

All we need now is you. You have read the testimonials of The Atlas Family Foundation, Marc Washington, Cindy and Charlie Marquis, and Ricci Ramos, donors who help Children's Bureau's families thrive.

I invite you to join us. Whether as a donor or a volunteer leader who helps us identify potential supporters, your commitment is critical to our success.

Be a partner in our journey to **BUILD HOPE** for vulnerable children and families.

Thank you for your consideration and generosity.

Ronald E. Brown, Ph.D. • President & CEO

“Recent research indicates that investments in prevention go well beyond protecting lifelong consequences such as debilitating physical and mental health problems leading criminal justice system, and lost educational and employment opportunities.”

children from maltreatment to also preventing maltreatment's devastating to considerable treatment and health-care costs, involvement in the - The Economics of Child Abuse, SaFe and Sound, San Francisco, 2020



Rachel, Reason and Baby D

Rachel first heard about Children's Bureau through her two best friends who decided to become foster parents. Knowing that there are 31,000 kids needing homes in Los Angeles and always wanting a large family herself, it was an easy decision for Rachel to make. She attended Resource Parent training with Children's Bureau and became a foster mom to a 17-year old girl, Reason. After Reason transitioned to the Transitional Independent Living Program, Rachel was matched with an infant, Baby D., whom Rachel fostered for two months.

"Children's Bureau has been great. With Reason and her unique situation, they gave me immediate answers and guidance... They were on-hand every step of the way, with finding doctors, therapists, and anything else we needed. I know the love, support, and stability I provided [to Baby D.] and her family over those two months will leave a lifelong impression on her."

- Rachel, Foster Care and Adoptions Program Parent



buildhope@all4kids.org



Say “Yes” to Build Hope!

Donor Information

Mr./Mrs./Ms. circle one First Name _____ Last Name _____ Suffix _____
Address _____ City _____ State _____ Zip _____
Residence Phone _____ Mobile Phone _____
Email Type Personal/Work: E-mail _____

Pledge

Funders in Hope

Benefactor Partners \$250K+ Protector Partners \$50,000 - \$249,999 Defender Partners \$5,000 - \$49,999

Partners in Hope

Pinnacle Partners \$25K+ Principal Partners \$15K+ Supporting Partners \$10K+

Children's Circle

Circle Patrons \$5,000 - \$9,999 Circle Leaders \$1,200 - \$4,999

CB Friends

\$25 month \$50 month \$100 month One-time gift of \$ _____

Should you choose to pledge your donation, please fill out the information below:

Pledge \$ _____ (amount) over _____ (years)

Signature: _____ Date: _____

I would like to learn more about The Society of 1904, our legacy giving program, because I want to consider including Children's Bureau in my estate plan.

I would be pleased to have my name associated with this gift as the naming opportunities policy allows.

I prefer to receive newsletters, gift acknowledgements, and annual reports by:

Email US mail During a meeting with a Philanthropy Advisor



Ways to Give

Make a Gift of Cash

Pledges in support of BUILD HOPE may be made by filling out the front of this form and by contacting buildhope@all4kids.org or by calling 1-855-685-HOPE (4673).

Matching Gifts

If your company has a matching gift program, please consider designating Children's Bureau as the beneficiary of your match. With matching gifts, you can double the impact of your gift!

Philanthropy Presentation for Your Organization

Our CDO, Monica Lee Copeland, can also arrange for Children's Bureau staff to make a presentation about how we support vulnerable children and families at your offices. Contact her to plan: monicaleecopeland@all4kids.org.

Gifts of Stock

Your broker can assist you in making a gift of stock via a direct transfer to Children's Bureau's account at Morgan Stanley Smith Barney (Account#: 496-116439-506 DTC#: 0015). Please contact Paulina Jones, Director of Operations & Mass Fundraising at paulinajones@all4kids.org to help facilitate your transaction.

The Society of 1904, Our Legacy Society

Planning for the future is vital, not only for individuals but for organizations as well. Turn your passion for our mission into a legacy with a deferred gift through your estate plan in support of BUILD HOPE. Your generous gift will ensure the continuity of the organization and its programs for many generations to come.

Opportunities For Connection and Engagement

Would you like to take a tour of Magnolia Place? Yes No

Would you like to attend our social events?

Golf Tournaments, Special Experiences, and Get-Togethers? Yes No

Are you interested in learning about volunteer opportunities?

Trustee Committees: Yes No

Special event support: Yes No

Phone-a-thons Yes No

Hosting events Yes No



Partner With Us to Support Children

Partners in Hope

A donor recognition society for the most generous contributors to Build Hope, offering three levels of giving: Pinnacle Partners \$25K+, Principal Partners \$15K+, Supporting Partners \$10K+.

Benefits:

- Bi-annual meeting opportunity with a Children's Bureau Philanthropy Advisor
- Invitations to 4-6 Hope Talks, moderated conversations held at private homes with keynote speakers
- Invitations to special stewardship events
- Partners Perspective newsletter 6 times per year
- Bi-Annual Phone Call with CEO/CDO
- Complimentary and/or discounted access to social events
- Printed Annual Report with letter from Partners in Hope Chair
- Printed Impact Reports with detailed outcomes on Children's Bureau's programs

The Society of 1904

A donor recognition society for donors who have created a life plan with Children's Bureau as the documented beneficiary.

Benefits:

- Annual meeting with a Children's Bureau Philanthropy Advisor
- Invitations to 1-2 stewardship events and interactions
- Bi-Annual Society of 1904 Circle newsletter
- Annual Phone Call with Special Guest
- Annual Society of 1904 Luncheon
- Complimentary or discounted access to annual social events
- Hybrid and Remote group viewing sessions of Hope Talks that are curated by a member of the 1904 Advisory Committee

CB Friends

A donor recognition society for essential givers, who generously donate less than \$1,200 annually to the Build Hope campaign.

Benefits:

- Invitations to annual social events and fundraisers
- Annual Report e-mailed with letter from a Children's Bureau Giving Officer

Children's Circle

A donor recognition society for core givers to Build Hope, offering two levels of giving: Circle Patrons \$5,000 - \$9,999, Circle Leaders \$1,200 - \$4,999.

Benefits:

- Annual meeting opportunity with a Children's Bureau Advisor
- Hybrid and Remote group viewing sessions of Hope Talks that are curated by a member of the Children's Circle Committee
- Complimentary stewardship events and interactions
- Children's Advocate newsletter 2 times per year
- Complimentary and/or discounted access to annual social events
- Annual Report emailed with letter from Children's Circle Chairs
- Impact Reports with detailed outcomes on Children's Bureau's programs

Funders in Hope

Institutional Giving Program featuring three giving levels: Benefactor Partners \$250K+, Protector Partner \$50,000 - \$249,999, Defender Partners \$5,000 - \$49,999.

Benefits:

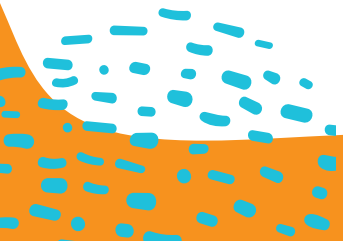
- Relationship with a Gift Officer
- 2-4 complimentary stewardship events
- Gift recognition through Children's Bureau's website, social media channels, and e-newsletters
- Annual Report mailed with letter from CPO and the Interim Associate Director of Institutional Giving & Research
- 2 Impact Reports with detailed outcomes on Children's Bureau's programs
- Complimentary employee volunteer engagement activities

Sponsors in Hope

A sponsorship recognition society for Hope Talks offers opportunities to sponsor an individual talk and to become the title sponsor of an annual series. Hope Talks are a curated, five-part annual informational series for current and future donors. Hope Talks will be conversational and intimate, featuring thought leadership on today's issues affecting vulnerable children and families. Attendees gather at private locations to experience a panel of experts and ask pivotal questions.

Benefits:

- Naming of an Individual Hope Talk
- Introduction Opportunity
- Website and Media Listing
- Annual Report Listing
- In-Person and Hybrid Event Access



Partner With Us to Support Children

Join a Fundraising committee!

Development Committee

Chaired by Tom Casarella

Staff Liaison: Monica Lee Copeland, Chief Philanthropy Officer

- Members will shape development strategies and plans including engaging Children's Bureau's Board in resource development and fundraising
- Creating plans for cause marketing (for-profit) ventures and projects
- Ensure that fund development is appropriately resourced
- Review gift acceptance, solicitation, and give/get policies
- Make recommendations for trustee and auxiliary fundraising group involvement
- Contribute to and raise awareness for fundraising programs and events
- Meeting Cadence: quarterly
- Members are composed of: Board of Directors, Board of Trustees, auxiliary group members, and volunteers

Partners in Hope Committee

Chaired by Tom Casarella and Curt Himebauch

Staff Liaisons: Monica Lee Copeland, Chief Philanthropy Officer

- Members will identify future partners and cultivate plans and benefits for each potential Partner in Hope as well as existing partners
- Promote giving opportunities and four to six stewardship events a year
- Meeting Cadence: six to eight times per year
- Members are composed of: Board of Directors, Board of Trustees, auxiliary group members, and volunteers who are committed to cultivating relationships that benefit our major donor program

Children's Circle Committee

Chaired by Nathan True-Daniels and Blake Nixon

Staff Liaisons: Yvette Herrera, Director of Individual Giving

- Members will cultivate plans and benefits for potential and existing Children's Circle donors
- Promote giving opportunities, stewardship events, in-person visits, and group tele-fundraising events
- Meeting Cadence: quarterly
- Members are composed of: Board of Trustees, auxiliary group members, and volunteers who are committed to cultivating relationships that benefit our core giving program

Society of 1904 Committee

Chaired by Salvador Villar

Staff Liaisons: Monica Lee Copeland, Chief Philanthropy Officer

- Collaboration with Children's Bureau's Advisory Committee and staff liaisons
- Members will cultivate life plan giving and host events such as the Annual Society of 1904 Luncheon
- Meeting Cadence: two to four times per year
- Members are composed of: past Board of Directors and Board of Trustees, Children's Bureau's retirees, and long-term committed donors and volunteers

Events Committee

Currently seeking Chair

Staff Liaison: Paulina Jones, Director of Operations & Mass Fundraising

- Collaboration with Children's Bureau's Philanthropy Team
- Members will plan social fundraising events like the President's Annual Golf Invitational, The Common Bowl for Children Festival, and other social events and gatherings that benefit Children's Bureau
- The Events Committee may create separate planning committees for each event
- Meeting Cadence: eight to ten times per year
- Members are composed of: Children's Bureau's Board of Trustees members, auxiliary group members, and volunteers

Work With Our Hope Building Team



Ron Brown, MBA, PhD • President & CEO

Ron has served as the President and CEO of Children's Bureau since 2018 and is responsible for all aspects of our \$50 million agency that operates 20 sites throughout Los Angeles and Orange County. He is determined to help us BUILD HOPE in order to create resiliency for the 50,000 children and family members we currently serve and the hundreds of thousands we will one day serve.

Ron joined Children's Bureau in 2000 managing our foster care, adoption, mental health and child abuse prevention programs. Under his leadership, program grants and contracts grew from \$11 MM to \$30 MM annually. He helped create the Magnolia Community Initiative, our collaborative venture with 70+ organizations to improve the well-being and outcomes of vulnerable children and families in a targeted area of Los Angeles. Previously, Ron served as the Executive Director for Citrus Valley Hospice, Director of Community Resources for Presbyterian Intercommunity Hospital, and CEO of Intercommunity Medical Center Foundation.

Monica Lee Copeland, MFA, CFRE • Chief Philanthropy Officer

Monica Lee welcomes the opportunity to secure significant investment for BUILD HOPE and to provide strategic leadership to our Hope Builders team and trustee committees. ML has raised over \$250 million for nonprofit institutions and billions for private equity investment. Previously, she served as the Chief Development Officer for Planned Parenthood Pasadena and The Cerritos College Foundation where she successfully raised \$10 MM for the Finish Great capital campaign. As the CEO of MLC & Company, she led philanthropic initiatives for Pasadena POPS Orchestra, KidSave International, and Agape Spiritual Center. She continues to provide NGO strategic planning expertise as Senior Counsel for Netzel Grigsby Associates. ML has significant private sector business development experience, formerly serving as the Chief Marketing Officer for Stone Ally, LLC and Clarke Financial Group, as well as a Senior Marketing Director for Transamerica Life Insurance and Retirement Services where she was responsible for a \$1.6 billion brand. A proud adoptive mother, she is deeply committed to protecting vulnerable children and families. She is a current Board Director of the Foothills Association of Kappa Kappa Gamma and volunteers for two arts organizations.

Yvette Herrera, CFRE • Director, Individual Giving

Yvette truly believes that people want to create a brighter a future for our children and are ready to be part of the solution. As a vice president and fundraising consultant for Netzel Grigsby Associates, Yvette worked closely with staff and volunteer leadership of social service, educational and faith-based non-profits throughout Southern California to raise millions of dollars. Her clients included the Special Olympics of Southern California, Bel Air Church, Southern California Public Radio, and the Los Angeles Food Bank. Yvette serves on the board of the Association of Fundraising Professionals (2022 Greater Los Angeles Chapter president) and on the Alumnae Leadership Council of Scripps College. She is past board president of Leadership California, Home Again Los Angeles and the Burbank Community YMCA. She was named Burbank Woman of the Year in 2010.



Work With Our Hope Building Team



Paulina Jones, MPA • Director, Operations & Mass Fundraising

Paulina is committed to safeguarding donor intent while preserving the integrity of organizational resources. Before coming to Children's Bureau, Paulina was a fundraiser for Planned Parenthood who exceeded her program's previous year giving by 50%. Prior, she was Treasurer at the Cerritos College Foundation where she managed financial systems of 300+ unrestricted, restricted, and endowment funds during a period of net asset growth from \$5MM to \$10MM. She volunteers as an officer at her local women's club and is a devoted mother.

Will Cooper • Associate Director, Digital Fundraising

Will is a tech-startup veteran who has been responsible for marketing, digital strategy, partnerships, and data analysis. He's helped companies set revenue records, win innovation awards, and secure over \$45MM in venture capital funding. Will is drawn to Children's Bureau's mission to protect vulnerable children through prevention, treatment, and advocacy. He is thrilled to start raising money for BUILD HOPE.



Isabel Galbraith • Associate Director of Institutional Giving & Research



Isabel is a seasoned fundraiser specializing in grants and she leads Children's Bureau's institutional giving efforts. Before joining CB, she fundraised for nonprofits in Washington, D.C. and Los Angeles, including LA's Best. Isabel is also a veteran educator at the collegiate level and taught Rhetoric courses at Howard University. When not raising money to BUILD HOPE, Isabel enjoys performing long-form improv and writing comedy scripts.

Adrian Chavez • Institutional Giving Specialist

Adrian is a writer and artist committed to improving access to high quality health and human services for children, families, and communities. As a disability and educational rights advocate, Adrian has led fundraising efforts to expand mental health services and free popular education in Los Angeles. He joined Children's Bureau in 2022 as a Grant Specialist as part of the Institutional Giving and Research Team. He hopes to further develop a culture of philanthropy amongst colleagues and peers.



Dianna Factor, MS • Events Consultant



Dianna is excited to BUILD HOPE by organizing Hope Talks, well-curated conversations about issues that affect vulnerable children and families. With 15 years of fundraising acumen, she is excited to produce events that will elevate our cause and connect individuals and organizations to our mission. Previously, she served as a Director of Special Events for Tower Cancer Research Foundation and the Colburn School. Dianna was an active volunteer at The Packer Collegiate Institute and is an accomplished classical violinist.

Join Our Committed Leadership

Children's Bureau Board of Directors Officers



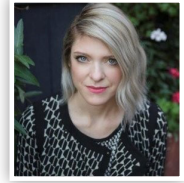
Matt Wilson, Chair
Managing Director
Oaktree Capital Management



Surendra Jain, M.D.
Founder
Napean Capital Group



Ricci Ramos
Sr. Program Manager
Riot Games



Amanda Ruch
Director
Capital Group, Global Fees



James St. Aubin, Treasurer
Chief Investment Officer
Sierra Investment Management



Marilyn Stein
Chair
Tikun Olam Foundation



Marc Washington
Founder & CEO
Supergut

Directors

O. Jacob Bobek
Executive Vice President
CBRE Los Angeles

Chris Jackson
Educator
Canyon High School

Paul Chen
Partner
Ernst & Young

Steven W. Moore
Partner
Brentwood Associates

Michael Traylor
Co-President
Traylor Brothers, Inc

Lisa Gritzner
CEO
LG Strategies

Janie Schulman
Partner (retired)
Morrison & Foerster LLP

Development Committee

Thomas Casarella, Chair
Oaktree Capital Management
Managing Director

Ronald E. Brown, Ph.D.
President & CEO
Children's Bureau of Southern California

Kara Ahmanson
Advancement & Grants
Wilshire Boulevard Temple

Marilyn Stein
Chair
Tikun Olam Foundation

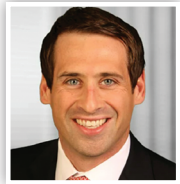
Salvador Villar
President & CEO
Mercado Plus

O. Jacob Bobek
Executive Vice President
CBRE Los Angeles

Stuart Taylor
Co-Founder & CFO
SterileBits, Inc.

Join Our Committed Leadership

Board of Trustees



Thomas Casarella, Chair
Managing Director
Oaktree Capital Management



Randall L. Bort, Treasurer
Partner
SandTree Holdings, LLC

Greg Barnes
President, Greater L.A.
Lockton Insurance Brokers, LLC

Matthew S. Clark
Managing Director
Wells Fargo Securities

Anthony Consoli
Founding Partner
MC, LLP

Chadd Davis
Partner & Managing Director
ETONIEN, LLC

Cecily Dean
Consultant
Strategic Partnerships

Dilshat Erkin
Senior Vice President
Clearlake Capital Group

Jeffrey S. Fields
Partner-in-Charge
Windes, Inc., TAS Department

Brian Ford
Partner
Kirkland & Ellis, LLP

Damon Frier
Partner
Grant Thornton, LLP

Kris Galashan
Partner
Leonard Green & Partners, LP

Curt Himebauch
Director
Ernst & Young, LLP

David Kass
Principal
Leonard Green & Partners, LP

Lewis W. Kneib
Partner
Latham & Watkins, LLP

Jordan L. Kruse
Managing Director
Oaktree Capital Management

Christopher Lovrien
Partner
Jones Day

Richard Magnuson
Tax Consultant
Kayne Anderson Capital Advisors

Peter Massumi
Founding Partner
MC LLP

Robert Morrison
Partner
White & Castle, LLP

David Nemecek
Partner
Kirkland & Ellis, LLP

James Pade
Partner
Clearlake Capital Group

Matt Peterson
Managing Director
AETHOS Consulting Group

Kevin Prewett
General Manager, Pro AV
Ingram Micro, Inc.

Gina Primeaux
Principal
Deloitte & Touche, LLP

Edward Ring
CEO
New Standard Equities, Inc.

Michael Swartz
Partner
Winston & Strawn, LLP

Nathan True-Daniels
Director
Barclays

Salvador Villar
President & CEO
Mercado Plus

James R. Walther
Senior Counsel
Arnold & Porter Kaye Scholer, LLP

Kyle Wheeler
Managing Partner
First Beverage Group

Casey Winters
Partner, Deal Advisory
KPMG, LLP