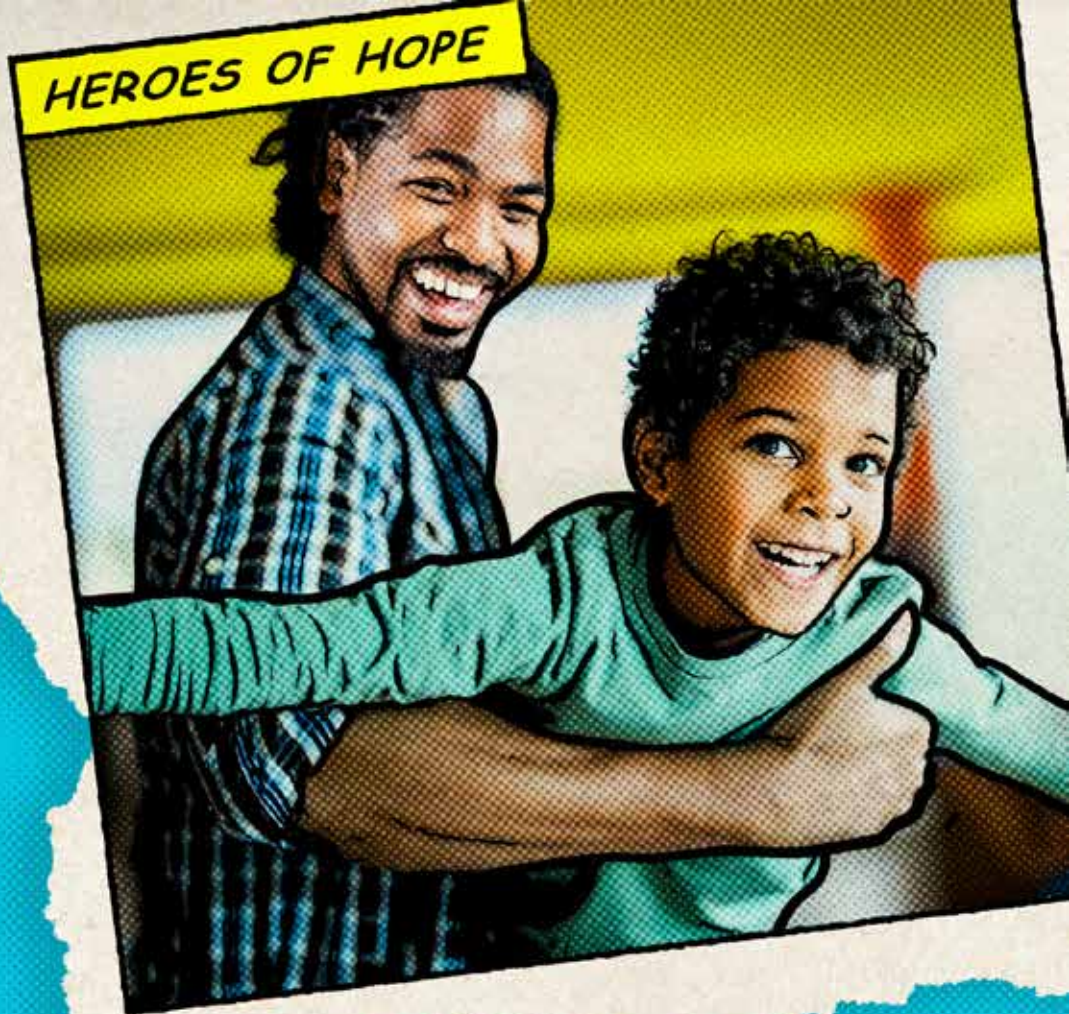




2020 Annual Report

HEROES OF HOPE



“I think a hero is really any person intent on making this a better place for all people.”

– Maya Angelou

Dear Friends,

Welcome to the new abnormal at Children's Bureau. Our 2019-2020 impact report reflects a year that began with a business as usual mantra that was quickly replaced by a heroic shift in how we do our business. What remained constant, however, is child abuse and neglect. In fact, the pandemic only escalated this horrific reality for thousands of children in our community.

But there is hope for these children...and that hope is Children's Bureau. During this unprecedented time, I have seen increased empathy for each other when physical interaction decreased. I have seen incredible creativity in how we connect with vulnerable children and families in meaningful ways. And I have seen a collective commitment to do more and to stand for what is right.

As conversations about systemic racism arose, Children's Bureau listened and resolved to do better. The work of our board's Diversity, Equity and Inclusion (DEI) Committee continued to foster forward-thinking changes at a leadership level. This year, a new DEI task force for staff was created along with various team cohorts that participate in guided learning and sharing discussions. We also began implementing trauma-informed care practices that complement our culturally enhanced programs and services.

This year also saw numerous tools, resources, and systems developed to augment our employees' work experience. Staff can access Children's Bureau University for a variety of helpful modules while Microsoft Teams, Zoom, and other online tools are now the norm for everyday communication. In



As conversations about systemic racism arose, Children's Bureau listened and resolved to do better. The work of our board's Diversity, Equity and Inclusion (DEI) Committee continued to foster forward-thinking changes at a leadership level. This year, a new DEI task force for staff was created along with various team cohorts that participate in guided learning and sharing discussions. We also began implementing trauma-informed care practices that complement our culturally enhanced programs and services.



This year also saw numerous tools, resources, and systems developed to augment our employees' work experience. Staff can access Children's Bureau University for a variety of helpful modules while Microsoft Teams, Zoom, and other online tools are now the norm for everyday communication. In fact, our investment in technology over the past few years was a key factor in our ability to shift our entire workforce of nearly 500 to work remotely in just three days.

It's truly been a year of heroic innovation, compassion, and perseverance. I am deeply grateful to you — our donors, supporters, corporate and community partners — who continue to stand with us in protecting vulnerable children. Thank you for being a hero of hope as we couldn't do this work without you.

With deep appreciation,

A handwritten signature in black ink that reads "Ronald E. Brown, Ph.D." The signature is fluid and cursive.

Ronald E. Brown, Ph.D.
President & CEO
Children's Bureau of Southern California

SHINING MOMENTS



Children's Bureau takes pride in its unique approach to child abuse prevention. Through advocacy efforts and a focus on primary prevention, we strive to provide the upmost effective and culturally competent services to families.

This year, the COVID-19 outbreak devastated families worldwide and we have yet to see the long-term effects. Through good times and moments of loss and uncertainty, one thing remained true; Children's Bureau is there for the most vulnerable families and communities. Here are some of the moments where Children's Bureau shined.



Staff from Children's Bureau's Prevention Team attended the 2020 National Home Visiting Summit in Washington, D.C.

To see more photos, [click here](#).

* COVID-19: Sharing Our Expertise & Resources

As leaders looked for anchors of hope, Children's Bureau continued to be called upon as an expert and collaborator across all areas of the agency.



Magnolia Place Preschool parent expresses heartfelt gratitude at drive-thru event.

To see more photos, [click here](#).



[Los Angeles & Orange County Business Journals | Children Are At Risk – It's Up to All of Us to Protect Them](#)



[Reuters | Coronavirus shelter-at-home rules upend U.S. child abuse prevention system](#)



[Santa Clarita Valley Signal | Abuse Amid the Coronavirus Crisis](#)



[L.A Times | "What if I run out?" Cost of diapers and rush to potty train strain low-income parents](#)



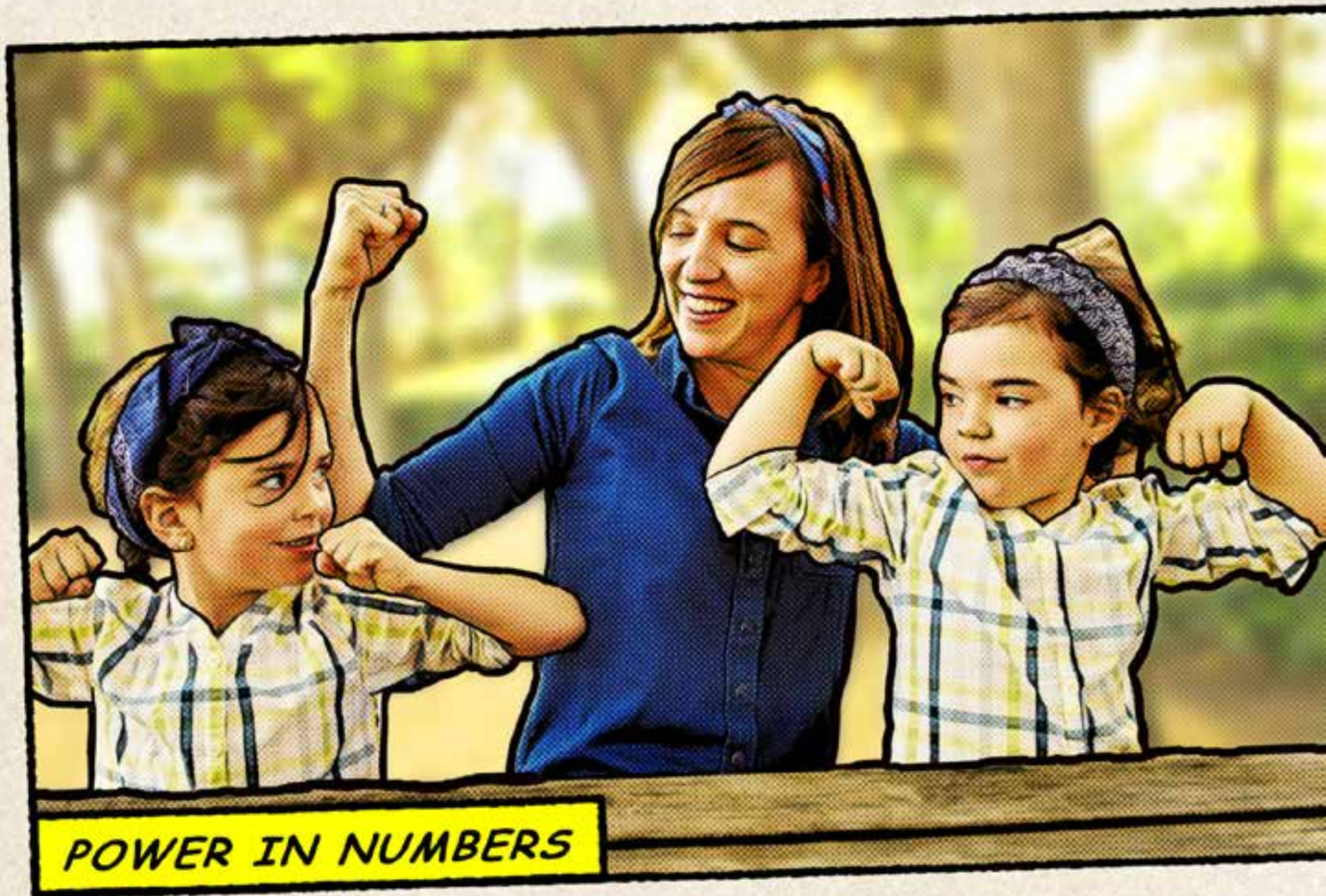
Chronicle of Social Change | Home Visitors Left to Check on Parents from Afar



KHTS 98.1 | National Foster Care Month



Green Hasson Janks | How One Child and Family Service Agency Has Moved to Remote Working in the Wake of COVID-19



Research shows that zip codes, family income and parent education levels determine a child's risk of abuse. Children's Bureau strives to ensure that the early environments children grow up in are safe no matter what factors are in place. The dollars, hours and hundreds of people that came together to make this possible are more than a number. They are a symbol of hope. Thanks to supporters like you, this is the impact we made this year.

Family Foster Care and Adoption | Families Brought Together

1,311 children served through foster care, adoption and support services

Meet the Goolsby-Kerrigan Family

“The fostering experience wasn’t what we imagined... but it was different in a much better way.”

Read about Kristina and Maeve’s family journey and how they welcomed their daughter Coco into their hearts and home.



Mental Health Services | Children and Parents Learning Together

Provided **109,863** hours of mental health therapy and counseling to **4,454** children and their families.

Prevention Programs | Communities Brought Together

5,000 home visits (in person and virtual) to **650** at-risk families with young children in need of parent education and services

600+ low-income children improved school readiness skills and received developmental and health screenings.



Served **411** unique participants.

Provided **956** hours of workshops to fathers and father-figures, for a total of **7,874** hours of services received by clients.

101

organizations used FAF Software throughout the U.S. and Canada, reaching more than

60,000 families

Framework for Healthy Families

Poverty, isolation, domestic violence and mental illness are just some of the risk factors that contribute to child abuse and neglect. Protective factors are the positive counterpoint to risk factors that provide a framework for defining child abuse prevention. For example, 84% of 2020 graduates from our Family Enrichment Program strengthened at least one protective factor. Here is a program-wide snapshot for each protective factor.

87%

of parents increased parental resilience

82%

of families reported having social connections

83%

of parents gained knowledge of parenting and child development

86%

of parents accessed concrete support in time of need

82%

of parents enhanced social and emotional competence of children

For more information about the protective factors, please visit the Center for the Study of Social Policy at cssp.org.

Our high-quality, effective services would not be possible without the support of our generous volunteer leaders. Time after time, these individuals have demonstrated a passionate commitment to the safety and well-being of vulnerable children and families. Thank you for helping us pave the way for a brighter future for children.





Marc Washington, Bryan Boghosian and Salvador Villar

[To see more photos, click here.](#)

2019/2020 Volunteer Leadership

Board of Directors

Chair

Patrick Niemann
EY

Vice Chairs

Mike Burke
AECOM

Shelli Herman
Shelli Herman & Associates, Inc.

Marilyn "Mindy" Stein
Tikun Olam Foundation

Carrie Tilton
*Catholic Community Foundation of Los Angeles/
Catholic Schools Collaborative/Shea Family Charities*

Treasurer/Vice Chair

Matt Wilson
Oaktree Capital Management, L.P.

Directors

Adrian Butler
Dine Brands Global

Lisa Gritzner
LG Strategies

Surendra Jain
Applecare Medical Group/Real Estate Family Office

Hasham Mukadam
Management Consultant

Sarah Richardson
Optum

Janie Schulman
Morrison & Foerster LLP

James St. Aubin
MUFG Union Bank

Michael Traylor
Traylor Bros., Inc.

Marc Washington
Uplifting Results Labs, Inc.

Hope Wintner
Civic Leader

Andy Wong
CBS Television

Board of Trustees – Los Angeles

Chair

O. Jacob Bobek
CBRE - Los Angeles

Vice Chairs

Steven Moore
Brentwood Associates

James Pade
Clearlake Capital Group

Treasurer

Randall L. Bort
SandTree Holdings, LLC

Secretary

Damon Fisher
Kirkland & Ellis LLP

Trustees

Greg Barnes
Lockton Insurance Brokers, LLC

Kenneth Baronsky
Sidley Austin LLP

Bryan Boghosian
Deloitte & Touche LLP

Stephanie Campbell
DIRECTV, Inc. (retired)

Thomas Casarella
Oaktree Capital Management, L.P.

Matthew S. Clark
Wells Fargo Securities

Chadd Davis
ETONIEN

Cecily Dean
Consultant/Strategic Partnerships

Brian Ford
Kirkland & Ellis LLP

Michael J. Fourticq, Sr.
Hancock Park Associates

Damon Frier
Grant Thornton LLP

Kris Galashan
Leonard Green & Partners, L.P.

Curt Himebauch
EY

David Kass
Leonard Green & Partners, L.P.

Jordon L. Kruse
Oaktree Capital Management, L.P.

Roger M. Lavery, III
Pacific Premier Bank

Christopher Lovrien
Jones Day

Richard Magnuson
Kayne Anderson Capital Advisors

James Marasco
Wells Fargo Capital Finance

Kelly Masuda
Caruso

David Nemecek
Kirkland & Ellis LLP

Matt Peterson
AETHOS Consulting Group

Corey Printup
The RLJ Companies

Amanda Ruch
Capital Group

Peyman Salehi
City National Bank

Kunal Soni
Morgan Stanley

Clinton R. Stevenson, Jr.
West Coast Housing Communities, LP

Michael Swartz
Scheper Kim & Harris LLP

Salvador Villar
Mercado Plus

James R. Walther
Arnold & Porter Kaye Scholer LLP

Kyle Wheeler
First Beverage Group

Matt Wilson
Oaktree Capital Management, L.P.

Casey Winters
KPMG LLP

Board of Trustees – Orange County

Chair

Gina Primeaux
Deloitte & Touche LLP

Trustees

Janice Bachmann
Disneyland Resort

Jeffrey S. Fields
Windes Inc.

Vanessa Flores
Capital Group

Christopher Hutnick
Deloitte & Touche LLP

Lori Irving
U.S. Bank

Kevin Prewett
Ingram Micro, Inc.

Jaclyn Stahl
Attorney

Keven J. Yue
Datapath Ltd.

2020/2021 Newly Elected & Returning Leadership

Board of Directors

Chris Jackson
Canyon High School

Ricci Ramos
Medtronic Inc.

Chair Elect

Matt Wilson
Oaktree Capital Management, L.P.

Vice Chairs Elect

Martin Jacobs
Capital Research Global Investors

Janie Schulman
Morrison & Foerster LLP

Board of Trustees – Los Angeles

Lewis W. Kneib
Latham & Watkins, LLP

Chair Elect

Thomas Casarella
Oaktree Capital Management, L.P.

Advisory Council

Jody Adair
Margie Baum
Alan Berkes
David Brown
Mark Carlin
Jim Ford
Mike Fourticq, Sr
Chris Frank
Linda Garrison
Connie Gavin
Thomas Hacking
Doug Hayes
Mark Lemons
Susana Luna
David Madison
Charlie Marquis
Hector Orci
Keith Renken
Stuart Taylor
Ana Valdez
Hal Washburn

Staff Leadership

Ronald E. Brown, Ph.D.
President & CEO

Corina Casco, LCSW
Chief Program Officer

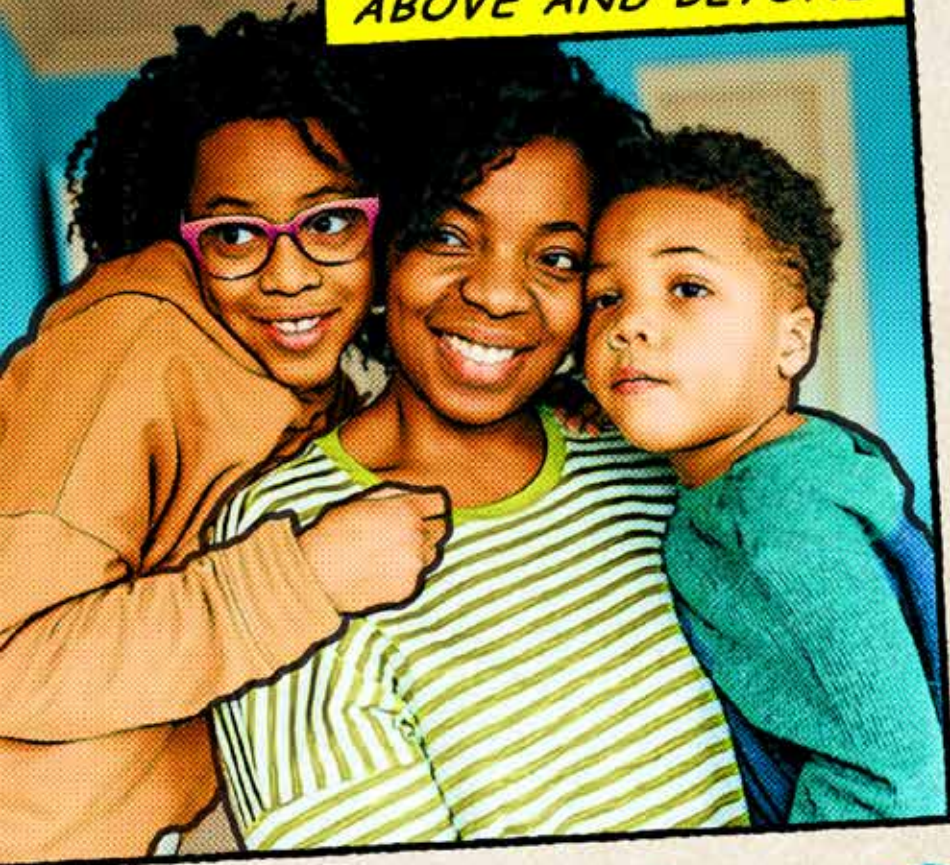
Stephanie Eversfield
Chief Development Officer

Kymerly Garrett, M.B.A.
Chief People Officer

Jacqueline Meek, C.P.A.
Chief Operating Officer

Gayle Whittemore, C.P.A., M.B.T.
Chief Financial Officer

ABOVE AND BEYOND



Whether in person or virtually, you went above and beyond to support our special events, young professional networks, family activities and fundraisers. Thank you for being a hero in the story to prevent child abuse.



Blue Tie Gala Committee Ceci Dean, Randy Kies, Beth Goldfarb Jackson, Shelli Herman, Maureen Trippe, George Barton, Sarah Goana, Julia Stewart, James (Jim) Dodge, Sarah Richardson and Tim Ortman

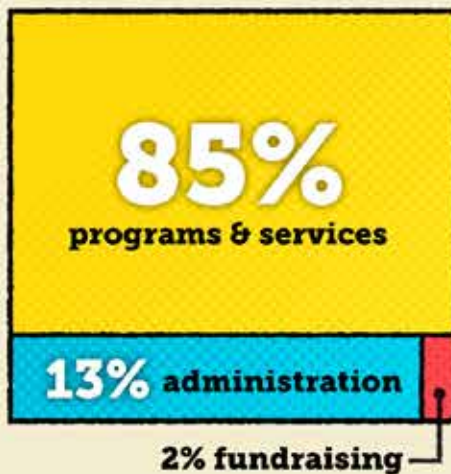
To see more photos, [click here](#).

FINANCIAL OVERVIEW

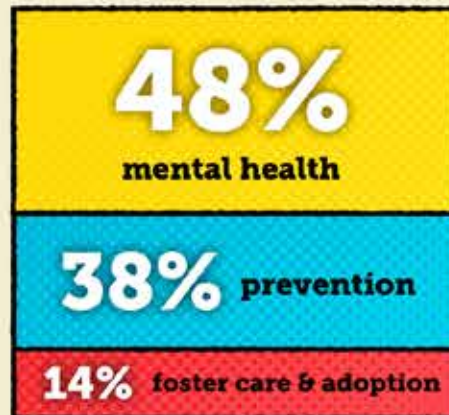


Fiscal Year 2019/20

AGENCY EXPENSES



PROGRAM EXPENSES



FY 19/20

REVENUE

Program Support	
Government Grants & Contracts	\$ 39,179,864
Private Charitable Support	5,228,260
Contributions In-Kind	1,386,355
Total Program Support	\$ 45,792,479

Other Revenue

Investment Income	\$ <37,898>
Rental and Other Income	738,648

EXPENSES

Programs and Services	
Mental Health	\$ 18,651,859
Prevention	14,799,916
Family Foster Care & Adoption	5,615,523
Total Programs and Services Expenses	\$ 39,067,298

Support Services

Administration & Community Relations	\$ 5,059,618
Fundraising	1,064,504

REVENUE

Program Support	
Government Grants & Contracts	\$ 39,179,864
Private Charitable Support	5,226,260
Contributions In-Kind	1,386,355
Total Program Support	\$ 45,792,479
Other Revenue	
Investment Income	\$ <37,898>
Rental and Other Income	738,648
Total Other Revenue	\$ 700,750
Total Revenue	\$ 46,493,229

EXPENSES

Programs and Services	
Mental Health	\$ 18,651,859
Prevention	14,796,916
Family Foster Care & Adoption	5,615,523
Total Programs and Services Expenses	\$ 39,067,298
Support Services	
Administration & Community Relations	\$ 5,959,618
Fundraising	1,064,504
Total Support Services	\$ 7,024,122
Total Expenses	\$ 46,091,420
Change in Net Assets	\$ 401,809

Children's Bureau audited financial statements are available upon request by calling 213.342.0134.

For every **\$1 spent** on prevention **\$8 to \$18** is saved in future public spending.



In 2020, we collectively experienced something we have not been through before and the families we serve felt the effects of this global uncertainty in a compounded manner. Amid the turmoil, you embraced compassion and came together to give families hope.

This honor roll reflects donations made during the 2019/2020 fiscal year. Thank you.



In 2020, we collectively experienced something we have not been through before and the families we serve felt the effects of this global uncertainty in a compounded manner. Amid the turmoil, you embraced compassion and came together to give families hope.

This honor roll reflects donations made during the 2019/2020 fiscal year. Thank you.

BUILDING FUTURES TOGETHER

2019/2020 Honor Roll

Individual Donors

Organizations

Gifts-In-Kind

Click the above links to view our honor roll.



YOUR LEGACY



YOUR LEGACY

Are you interested in being part of the future story to prevent child abuse? You can ensure the agency continues to grow with a legacy gift. Or, simplify your giving with a donor advised fund.

To learn more, [click here](#).



KIRBY SOCIETY MEMBERS

**“Someone is sitting in
the shade today because
someone planted a tree
a long time ago.”**

– Warren Buffett

• Liza-Mae and Mark Carlin
• Rhonda Fleming Carlson
• Ruby and Edmond* Davis
• Mary Anne and A. Redmond* Doms
• Linda S. Garrison
• Beth Goldfarb Jackson and Jeffrey Jackson
• Connie and Doug Hayes
• Dr. M. Alfred Haynes and
• Mrs. Hazel Haynes
• Ambassador James D. Hodgson* and Mrs. Maria Hodgson*
• Tina M. Johann
• Marvel and Robert* Kirby
• Judy and Rex Licklider
• Martha and Alex Morales
• Dr. James and Judy Nelson, in honor of Jason
• Royal Radtke
• Joan* and Keith Renken
• Carmine Salvucci
• Sandy Sladen
• George A. Studer
• Ana Lourdes and Salvador Villar
• Alice and Don Willfong*
• Three Anonymous Members

*deceased

COMMUNITIES WE SERVE



LOS ANGELES COUNTY

- Carson
- Lancaster
- Los Angeles (2)
- Long Beach
- Palmdale
- Valencia
- West Covina

ORANGE COUNTY

- Anaheim
- Huntington Beach
- Lake Forest
- San Juan Capistrano
- Santa Ana (2)

Be a hero to a child in need.

GIVE NOW TO PREVENT CHILD ABUSE

CLICK
HERE



Be a hero to a child in need.

GIVE NOW TO PREVENT CHILD ABUSE

CLICK
HERE 



Headquarters: 1910 Magnolia Avenue, Los Angeles, CA 90007
888.255.4543 | all4kids.org

